

**ENSTO**

# **ENSTO UNDERGROUND SOLUTIONS**

Utility Networks





# Contents

<b>Ensto – reliable provider of utility networks solutions</b>	4
<b>Ensto Underground – new extensive range of underground cable accessories</b>	5
<b>Ensto Selecto – Internet-based accessory selection program</b>	6
<b>Ensto Underground Low Voltage Accessories</b>	8
Low voltage cable joints	10
Low voltage cable terminations	12
Low voltage cable connectors and lugs	13
Heat shrink products	14
<b>Ensto Underground Medium Voltage Accessories</b>	18
Medium voltage cable joints	20
Medium voltage cable terminations	24
<b>Notes</b>	28

## Ensto – reliable provider of utility networks solutions

Ensto manufactures and markets network construction solutions for both overhead line and underground cable networks.

The Ensto Overhead range includes low and medium voltage overhead line solutions for various international systems, such as Four Core, Insulated Messenger Wire and Uninsulated Messenger Wire Systems for low voltage and Covered and Bare line systems for medium voltage.

Now Ensto has invested in underground cable products as well, introducing its own Ensto Underground solution. The solution offers new, comprehensive accessory packages for low and medium voltage underground cable networks.

Ensto was founded in 1958, and the company has extensive experience and knowhow of the distinctive aspects of utility network construction and customers' wishes worldwide.

This has helped us design reliable and pertinent solutions that are optimally suited to a great variety of conditions. Ensto products have been designed to withstand large variations in temperature, UV radiation, and humid and wet conditions. Ensto's reliability is based on strong product development, carried out in partnership with our customers. All Ensto products' electrical and mechanical properties are tested in various weather conditions in accordance with national and international standards.



## Ensto Underground – new extensive range of underground cable accessories

The share of underground cabling in the power supply system is growing rapidly, especially in densely populated areas. Underground cabling is well protected from stress such as storms, ice, frost and the scorching sun. Moreover, underground cable networks are relatively maintenance-free and their service life routinely extends to several decades.

Ensto Underground includes an extensive range of low and medium voltage UG cable network accessories for the voltage range of 1 to 36 kV. This range includes accessories for both plastic and paper insulated cables and all the required transition joints. The products represent well-established Ensto quality and have been tested in independent European test laboratories.

Information and wishes obtained from our customers have been incorporated in product development. This intelligence has been used, in particular, to make product installation and implementation easier.

In addition to high-quality product packages, Ensto provides its customers with continuous training and expert customer service. Special emphasis has been placed on making information more readily available to our customers. Product information, installation instructions and specifications for the entire product range are also available on the Internet. Also, Ensto provides its customers with an Internet-based underground cable accessory selection program, making it much easier to find the appropriate underground cable accessories for selected cables.





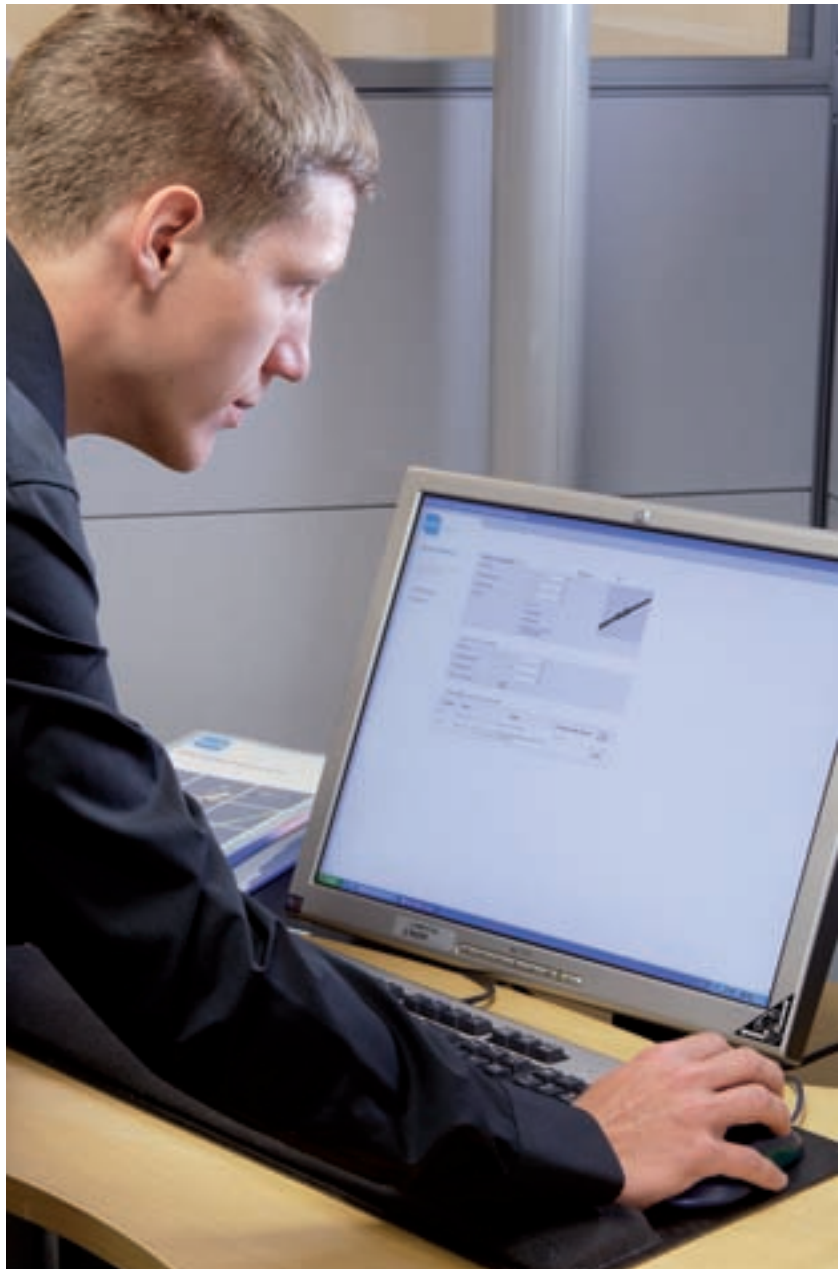
## Ensto Selecto – unique Internet-based accessory selection program

Ensto product solutions are complemented by Ensto Selecto, an Internet-based selection program, using which it is easy to select the Ensto Underground accessories that are optimally suited to various cable types. The program is extremely easy to use and covers low and medium voltage network cables used in most European countries.

This solution provides the correct accessories for each cable type, eliminating the possibility of erroneous choices. In addition to the basic package, Ensto Selecto offers simultaneously the required additional accessory packages. The program includes a link to the product card and installation instructions on the Ensto website.

Ensto Selecto includes the most important cable types used in the world. These can be found in the local Ensto pages reached through [www.ensto.com](http://www.ensto.com)

It is also easier to order products using the program. Products can be assembled in an Excel table that can be directly attached to an order.

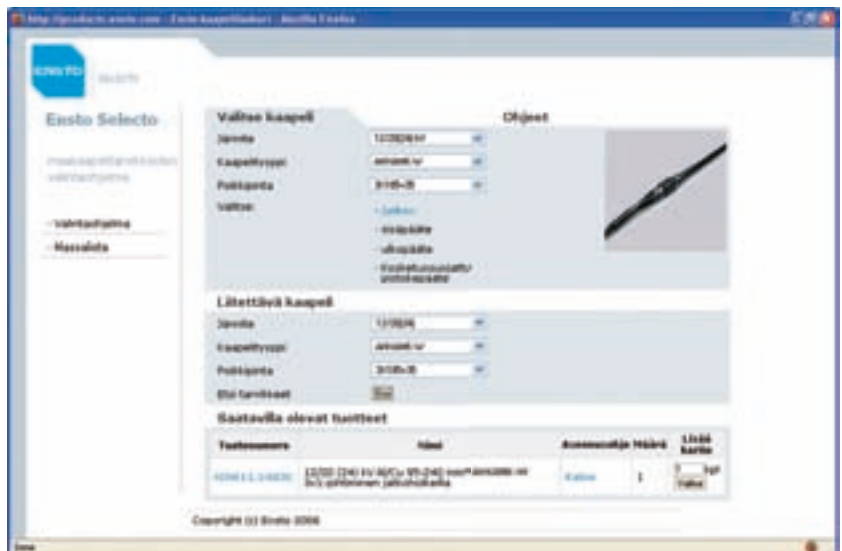


## The Ensto Selecto UG cable selection program is operated as follows:

1. Select first voltage, cable type and cross section, then required accessory: joint, indoor termination, outdoor termination or screened separable connector.



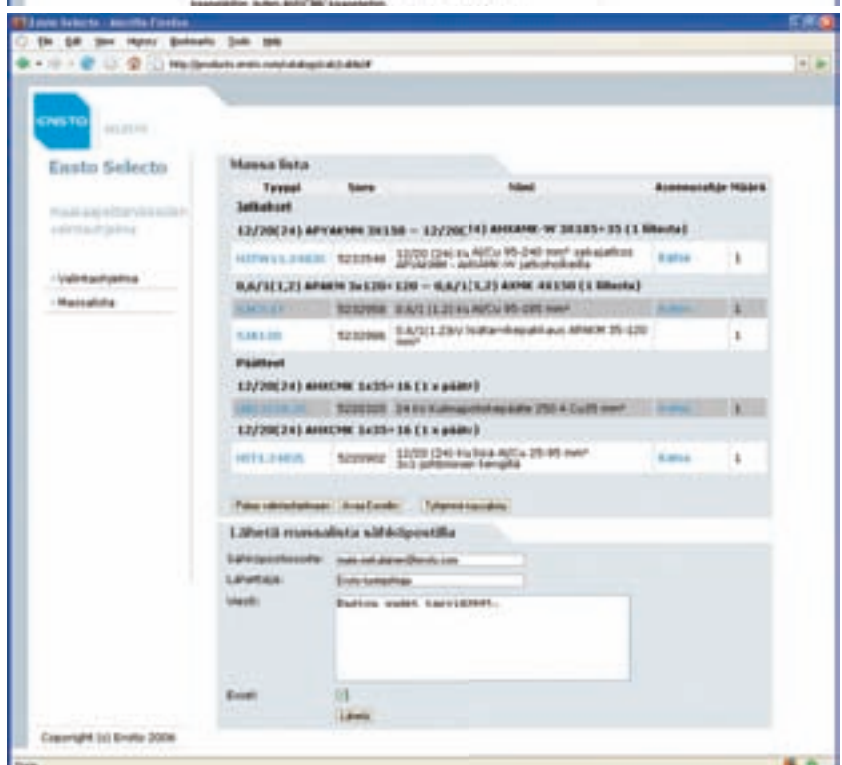
2. The Ensto Selecto program will find the accessories suited to the cable you selected, and all the additional accessories for installation when required.



3. Through the program, you can also view detailed product information and obtain product installation instructions in ready-to-print file format.



4. You can order products more easily than before by placing the underground cable accessories recommended by the program in an Excel table, which you can then attach to your order.



## Ensto Underground low voltage accessories

Ensto's low voltage underground range has expanded further and includes products such as transition joints. Our underground cable solution packages have been designed to include all the required components for the product.

Ensto's low voltage underground cable solutions cover the following low voltage network products.

1. 1 kV connectors and cable lugs equipped with shear head bolts
2. Low voltage indoor and outdoor terminations for both 3 core and 4 core plastic and paper insulated cables
3. Low voltage joints for both 3 core and 4 core plastic and paper insulated cables.
4. New straight and transition joints
5. Low voltage cable distribution cabinets and their accessories, protection category IP 20







## LOW VOLTAGE CABLE ACCESSORIES

### Low voltage cable joints

#### Heat shrink joints

##### SJK joint kits

The joint kit is used for jointing 1 kV cables with plastic insulation and plastic outer sheath. The kit is suitable for 4 to 4 core and 4 to 3+1 core cables. The kit includes four shear head bolt connectors suitable for both aluminium and copper conductors, grinding and cleaning materials, four heat shrink tubes for insulation and one for outer protection.

TYPE	EAN	CONDUCTOR SIZE mm <sup>2</sup>	PACKAGE/PCS
SJK0.47	6418677418457	Al /Cu 6-25	1
SJK1.47	6418677403187	Al/Cu 6-50	1
SJK2.47	6418677403217	Al/Cu 50-95	1
SJK3.47	6418677403248	Al/Cu 95-185	1
SJK4.47	6418677403262	Al/Cu 150-300	1



##### SJK joint kits without connectors

The joint kit is used for jointing 1 kV cables with plastic insulation and plastic outer sheath. The kit is suitable for 4 to 4 core and 4 to 3+1 core cables. The kit includes grinding and cleaning materials, four heat shrink tubes for insulation and one for outer protection. The connectors are not included.

TYPE	EAN	CONDUCTOR SIZE mm <sup>2</sup>	PACKAGE/PCS
SJK0	6418677446443	6-35	20
SJK1	6418677403170	25-70	20
SJK2	6418677403194	50-120	1
SJK3	6418677403224	95-185	1
SJK4	6418677407772	150-300	1



##### SJJK joint kits

The joint kit is used for jointing 1 kV cables with plastic insulation and plastic outer sheath. Because the outer protection is achieved by a repair wrap, the free cable length required for installation is short. The kit is suitable for 4 to 4 core and 4 to 3+1 core cables. The kit includes four shear head bolt connectors suitable for both aluminium and copper conductors, grinding and cleaning materials, four heat shrink tubes for insulation and one repair wrap for outer protection.

TYPE	EAN	CONDUCTOR SIZE mm <sup>2</sup>	PACKAGE/PCS
SJJK2.47	6418677419584	Al/Cu 70-95	1
SJJK3.47	6418677419591	Al/Cu 120-185	1
SJJK4.47	6418677430817	Al/Cu 150 - 300	1



##### SJA additional kits

The additional kit is used together with a 1 kV joint kit SJK for jointing of belted paper insulated, aluminium shielded 3 core cables. The kit is suitable for transition from belted paper insulated 3 core cable with Al-shield to 4 core plastic insulated cable. The kit includes three heat shrink tubes for protection of the paper insulation, a heat shrink breakout, a piece of H07V-K cable for jointing the aluminium shields.

TYPE	EAN	CONDUCTOR SIZE mm <sup>2</sup>	BASIC KIT	PACKAGE/PCS
SJA1	6418677445675	Al/Cu 35-50	SJK1.47	20
SJA2	6418677445682	Al/Cu 50-95	SJK2.47	20
SJA3	6418677445699	Al/Cu 95-240/185	SJK3.47 SJK4.47	5





## LOW VOLTAGE CABLE ACCESSORIES

### Low voltage cable joints

#### Heat shrink joints

##### SJAP additional kits

The additional kit is used together with the 1 kV joint kit SJK for jointing of 3 core belted paper cables (e.g. APAKM).

The kit is suitable for straight 3 core belted paper insulated cable with Al-sheath

The kit includes six heat shrink tubes for protection of the paper insulation, two heat shrink breakout, two pieces of H07V-K.

TYPE	EAN	CONDUCTOR SIZE mm²	BASIC KIT	PACKAGE/PCS
SJAP1	6418677452567	35-50	SJK1.4, SJK1.47	1
SJAP2	6418677452574	50-95	SJK2.4, SJK2.47	1
SJAP3	6418677452581	95-185/240	SJK3.4, SJK3.47, SJK4.4, SJK4.47	1



##### SJL additional kits

The additional kit is used together with the 1 kV joint kit SJK for jointing the concentric conductors. The kit provides a shield over the joint. The kit includes a shear head bolt connector, a heat shrink tube for inner covering and a mesh tape of tinned copper wires for shielding. The kit is suitable for joint from 3+1 core to 3+1 core or from 4+1 core to 4+1 core plastic insulated cable.

TYPE	EAN	CONDUCTOR SIZE mm²	BASIC KIT	PACKAGE/PCS
SJL50	6418677403293	Al/Cu 6-50	SJK1.47	15
SJL185	6418677403279	Al/Cu 50-185	SJK2.4 SJK 2.47 SJK3.3 SJK3.47	1
SJL300	6418677403286	Al/Cu 150-300	SJK4.4 SJK4.47	1



##### SJP additional kits

The additional kit is used together with the 1 kV joint kit SJK for jointing of belted paper insulated, lead shielded, steel tape armoured 4 core cables. The kit is suitable for transition from belted paper insulated 4 core cable with lead shield. The kit includes three heat shrink tubes for protection of the paper insulation, a heat shrink breakout and a braid of tinned copper wires for jointing the lead sheaths and armours.

TYPE	EAN	CONDUCTOR SIZE mm²	BASIC KIT	PACKAGE/PCS
SJP50	6418677403323	Al/Cu 10-50	SJK1.47	20
SJP120	6418677403309	Al/Cu 70-120	SJK3.47	15
SJP240	6418677403316	Al/Cu 150-240	SJK4.3.47 SJK4.47	5



##### SJPP additional kits

The additional kit is used together with the 1 kV joint kit SJK for jointing of belted paper insulated, lead shielded, armoured 3+1 core cables.

The kit is suitable for straight joint of 3+1 core belted paper insulated cables with lead shield and armour.

The kit includes eight heat shrink tubes for protection of the paper insulation, two heat shrink breakouts, tinned copper braids, two constant force spring.

TYPE	EAN	CONDUCTOR SIZE mm²	BASIC KIT	PACKAGE/PCS
SJPP50	6418677452598	10-50	SJK1.47	1
SJPP120	6418677452604	70-120	SJK2.47, SJK3.47	1
SJPP240	6418677452611	150-240	SJK3.47, SJK4.47	1



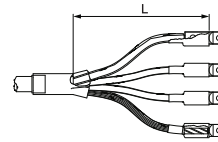
## LOW VOLTAGE CABLE ACCESSORIES

### Low voltage cable terminations

#### Heat shrink terminations

##### STKO outdoor termination kits 4 core

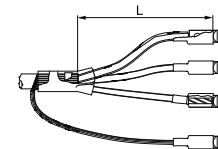
The termination kit is used for outdoor terminating of 1 kV cables with plastic insulation and plastic outer sheath. The kit is suitable for 4 core cables. The kit includes four shear head bolt cable lugs suitable for both aluminium and copper, black and green/yellow heat shrink tubes for core identification and sealing, and a heat shrink breakout for sealing.



TYPE	EAN	CONDUCTOR SIZE mm <sup>2</sup>	L mm	PACKAGE/PCS
STKO1A.27	6418677445477	Al/Cu 16-25	300	10
STKO1B.27	6418677445484	Al/Cu 35-50	300	10
STKO2.27	6418677445491	Al/Cu 50-95	400	10
STKO3.27	6418677445507	Al/Cu 95-185	500	5
STKO4.27	6418677445514	Al/Cu 185-300	500	5

##### STKO outdoor termination kits 3+1 core

The termination kit is used for outdoor terminating of 1 kV cables with plastic insulation and plastic outer sheath. The kit is suitable for 3+1 core cables (cables with concentric conductor). The kit includes four shear head bolt cable lugs suitable for both aluminium and copper, black and green/yellow heat shrink tubes for outer protection of the cores, four shorter heat shrink tubes for core identification and sealing, and a heat shrink breakout for sealing.



TYPE	EAN	CONDUCTOR SIZE mm <sup>2</sup>	L mm	PACKAGE/PCS
STKO10.27	6418677445521	Al/Cu 16-25	300	10
STKO11.27	6418677445538	Al/Cu 35-50	300	10
STKO12.27	6418677445545	Al/Cu 50-95	400	10
STKO13.27	6418677445552	Al/Cu 95-185	500	5
STKO14.27	6418677445569	Al/Cu 185-300	500	5

##### STKI indoor termination kits 4 core

The termination kit is used for indoor terminating of 1 kV cables with plastic insulation and plastic outer sheath. The kit is suitable for 4 core cables. The kit includes four shear head bolt cable lugs suitable for both aluminium and copper, four short heat shrink tubes for core identification and sealing, a heat shrink breakout for sealing.

TYPE	EAN	CONDUCTOR SIZE mm <sup>2</sup>	PACKAGE/PCS
STKI1A.27	6418677445576	Al/Cu 16-25	10
STKI1B.27	6418677445583	Al/Cu 35-50	10
STKI2.27	6418677445590	Al/Cu 50-95	10
STKI3.27	6418677445606	Al/Cu 95-185	5
STKI4.27	6418677445613	Al/Cu 185-300	5



##### STKI indoor termination kits 3+1 core

The termination kit is used for indoor terminating of 1 kV cables with plastic insulation and plastic outer sheath. The kit is suitable for 3+1 core cables (cables with concentric conductor). The kit includes four shear head bolt cable lugs suitable for both aluminium and copper, four short heat shrink tubes for core identification and sealing, and a heat shrink breakout for sealing.

TYPE	EAN	CONDUCTOR SIZE mm <sup>2</sup>	PACKAGE/PCS
STKI11.27	6418677445637	Al/Cu 16-50	10
STKI12.27	6418677445644	Al/Cu 50-95	10
STKI13.27	6418677445651	Al/Cu 95-185	5
STKI14.27	6418677445668	Al/Cu 185-300	5





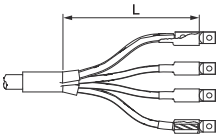
LOW VOLTAGE CABLE ACCESSORIES

Low voltage cable terminations

Heat shrink terminations

STA indoor and outdoor termination kits

The termination kit is used for indoor and outdoor terminating of 1 kV belted paper insulated, aluminium shielded 3 core cables. The kit includes four shear head bolt cable lugs suitable for both aluminium and copper, a piece of H07V-K cable for terminating the aluminium shield, black and blue heat shrink tubes for outer protection of the cores, four shorter heat shrink tubes for core identification and sealing, and a heat shrink breakout for sealing.



TYPE	EAN	CONDUCTOR SIZE mm²	L mm	PACKAGE/PCS
STA1	6418677445705	Al/Cu 35-50	1000	10
STA2	6418677445712	Al/Cu 70-95	1000	1
STA3	6418677445729	Al/Cu 95-150	1000	1
STA4	6418677445736	Al/Cu 185-240	1000	1

STE earthing kit for paper termination

The additional kit is used together with the 1 kV STKO kit for termination of paper insulated, lead shielded, armoured 3+1 core cables (e.g. PLKVJ). The kit includes heat shrink tube, a tinned copper braid, sealing mastic, a constant force spring, a screw clip and an installation instruction.



TYPE	EAN	CONDUCTOR SIZE mm²	BASIC KIT	PACKAGE/PCS
STE0	6418677452628	10-50	STK01A.27, STK01B.27	1
STE1	6418677452635	50-95	STK02.27	1
STE2	6418677452642	95-240	STK03.27, STK04.27	1

Low voltage cable connectors and lugs

SJ shear head bolt connectors

The connectors are used for jointing conductors of 1 kV cables. Because of the shear head bolt construction, no crimping tools are needed. The required torque is achieved by tightening the bolt until it breaks off. The connectors are water tight and suitable for solid and stranded, sector shaped and circular, conductors. The core insulation may be plastic or paper.



TYPE	EAN	CONDUCTOR SIZE mm²	PACKAGE/PCS
SJ0.47	6418677418464	Al/Cu 6-25	100
SJ1.47	6418677403040	Al/Cu 6-50	100
SJ2.4	6418677403057	Al 50-95	100
SJ2.47	6418677403064	Al/Cu 50-95	100
SJ3.4	6418677403071	Al 95-185	50
SJ3.47	6418677403088	Al/Cu 95-185	50
SJ4.4	6418677403095	Al 150-300	50
SJ4.47	6418677403101	Al/Cu 150-300	50

## LOW VOLTAGE CABLE ACCESSORIES

### Low voltage cable connectors and lugs

#### Low voltage cable connectors and lugs

##### SAL shear head bolt cable lugs

The cable lugs are used for terminating conductors of 1 kV cables. Because of the shear head bolt construction, no crimping tools are needed. The required torque is achieved by tightening the bolt until it breaks off. The lugs are water tight and suitable for solid and stranded, sector shaped and circular conductors.



TYPE	EAN	CONDUCTOR SIZE mm <sup>2</sup>	HOLE DIAMETER mm	PACKAGE/PCS
SAL1.27	6418677401404	Al/Cu 6-50	8.5	100
SAL1.271	6418677401411	Al/Cu 6-50	10.5	100
SAL1.272	6418677401428	Al/Cu 6-50	12.5	100
SAL2.2	6418677401435	Al 50-95	10.5	100
SAL2.27	6418677401442	Al/Cu 50-95	10.5	100
SAL2.272	6418677401459	Al/Cu 50-95	12.5	100
SAL3.2	6418677401466	Al 95-185	12.5	50
SAL3.27	6418677401473	Al/Cu 95-185	12.5	50
SAL3.272	6418677401480	Al/Cu 95-185	16.5	50
SAL4.2	6418677401497	Al 150-300	12.5	50
SAL4.27	6418677401503	Al/Cu 150-300	12.5	50
SAL4.271	6418677416163	Al/Cu 150-300	14.0	50
SAL4.272	6418677401510	Al/Cu 150-300	17.0	50

##### SJT filling parts

The filling parts are used together with shear head bolt connectors SJ, when it is necessary to join conductor sizes smaller than the range of the connector allows. They are suitable for both aluminium and copper conductors. The part increases the size of the conductor to the minimum size the connector requires.



TYPE	EAN	SIZE mm <sup>2</sup>	FOR JOINT	PACKAGE/PCS
SJT2	6418677407789	50	SJ 2.4, SJ 2.47	500
SJT3	6418677407796	95	SJ 3.4, SJ 3.47	500
SJT4	6418677407802	185	SJ 4.4, SJ 4.47	200

## Heat shrink products

#### Medium wall heat shrink tubes

##### CPEEL medium wall tubes with adhesive

Medium wall heat shrink tubes are used for insulation and outer protection for 1 kV cables. The tubes are UV resistant and halogen free. The colour is black.



TYPE	EAN	LENGTH mm	DIAMETER MAX/ MIN mm	FINAL WALL THICKNESS mm	PACKAGE/ PCS
CPEEL19-6/1000	6418677442506	1000	19/6	1.5	50
CPEEL30-8/1000	6418677442513	1000	30/8	2.0	30
CPEEL40-12/1000	6418677417153	1000	40/12	2.0	12
CPEEL50-16/1000	6418677442520	1000	50/16	2.0	10
CPEEL63-19/1000	6418677417177	1000	63/19	2.5	8
CPEEL75-22/1000	6418677437991	1000	75/22	3.0	6
CPEEL95-30/1000	6418677442537	1000	95/30	3.3	4
CPEEL115-34/1000	6418677442544	1000	115/34	3.3	1
CPEEL140-42/1000	6418677417207	1000	140/42	3.5	1

LOW VOLTAGE CABLE ACCESSORIES

Heat shrink products

Thick wall heat shrink tubes

CPEEPL thick wall tubes with adhesive

Thick wall heat shrink tubes are used for insulation and outer protection for 1 kV cables. The tubes are UV resistant and halogen free. The colour is black.

TYPE	EAN	LENGTH mm	DIAMETER MAX/MIN mm	FINAL WALL THICKNESS mm	PACKAGE/ PCS
CPEEPL13-4/1000	6418677442636	1000	13/4	2.4	1
CPEEPL19-6/1000	6418677442643	1000	19/6	2.4	1
CPEEPL33-8/1000	6418677417337	1000	33/8	3.0	1
CPEEPL45-12/1000	6418677417344	1000	45/12	4.1	1
CPEEPL51-16/1000	6418677442650	1000	51/16	2.1	1
CPEEPL68-22/1000	6418677442667	1000	68/22	4.1	1
CPEEPL85-25/1000	6418677442674	1000	85/25	4.1	1
CPEEPL130-36/1000	6418677442681	1000	130/36	4.2	1
CPEEPL165-50/1000	6418677442698	1000	165/50	4.5	1

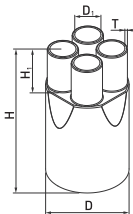


Cable breakouts and end caps

SB0 cable breakouts

The cable breakouts are used to protect the terminated cable ends against moisture and dirt. The breakouts are suitable for both plastic and belted paper insulated 1 kV cables. They are UV resistant and halogen free, and come with adhesive. The colour is black.

TYPE	EAN	NO OF CORES	D MAX/ MIN mm	D1 MAX/ MIN mm	FINAL WALL THICKNESS mm	H mm	H1 mm	CONDUCTOR SIZE mm <sup>2</sup>	PACKAGE/ PCS
SB02.1	6418677442865	2	30/10	12/5	1.6	95	28	2x16	1
SB02.2	6418677442872	2	50/23	21/8	3.2	119	34	2x25-95	1
SB03.1	6418677442889	3	25/10	9/3	2.5	76	20	3x16	50
SB03.3	6418677442896	3	50/21	22/9	3.5	190	50	3x25-120	25
SB03.4	6418677442902	3	75/30	32/14	3.5	210	60	3x95-300	25
SB03.5	6418677442919	3	110/50	52/20	3.8	210	60	3x240-300	15
SB03.6	6418677442926	3	135/56	64/28	3.8	270	65	3x300	3
SB04.1	6418677442933	4	35/16	12/5	2.3	105	20	4x16-50	100
SB04.2	6418677442940	4	44/20	15/6	3.3	175	46	4x35-120	100
SB04.3	6418677442957	4	60/27	23/8	3.3	220	48	4x70-150	75
SB04.4	6418677442964	4	90/35	33/15	4.2	250	65	4x150-300	24



## LOW VOLTAGE CABLE ACCESSORIES

### Heat shrink products

#### Cable breakouts and end caps

##### SEC cable end caps

Cable end caps are used to protect the cable ends against moisture and dirt. The end caps are useful especially when cables are stored outdoors. The caps are suitable for both plastic and belted paper insulated 1 kV cables as well as for telecommunication cables. They are UV resistant and halogen free and with adhesive. The colour is black.



TYPE	EAN	LENGTH mm	DIAMETER MAX/MIN mm	FINAL WALL THICKNESS mm	PACKAGE/ PCS
SEC1.1	6418677442797	45	12/4	1.2	1
SEC1.2	6418677442803	60	22/8	3.0	1
SEC1.3	6418677442810	80	35/15	3.0	1
SEC1.4	6418677442827	88	55/25	4.0	1
SEC1.5	6418677442834	105	75/35	4.2	1
SEC1.7	6418677442858	110	115/60	4.2	5

#### Heat shrink repair wraps

##### SRS heat shrink repair wraps

Repair wraps are used for repairing of damaged insulation and outer sheath of 1 kV cables. The wrap is folded around the damaged cable part, closed with a zipper and heat shrunk. The wraps are UV resistant and halogen free and come with adhesive. The colour is black.



TYPE	EAN	LENGTH mm	DIAMETER MAX/MIN mm	FINAL WALL THICKNESS mm	PACKAGE/ PCS
SRS3.1	6418677442971	1000	50/15	1.5	1
SRS3.15	6418677442988	1500	50/15	1.5	1
SRS4.1	6418677442995	1000	75/22	1.5	1
SRS4.15	6418677443008	1500	75/22	1.5	1
SRS5.1	6418677443015	1000	105/30	1.5	1
SRS5.15	6418677443022	1500	105/30	1.5	1
SRS6.1	6418677443039	1000	146/38	1.5	1
SRS6.15	6418677443046	1500	146/38	1.5	1
SRS7.1	6418677443053	1000	188/55	1.5	1
SRS7.15	6418677443060	1500	188/55	1.5	1





## Ensto Underground medium voltage accessories

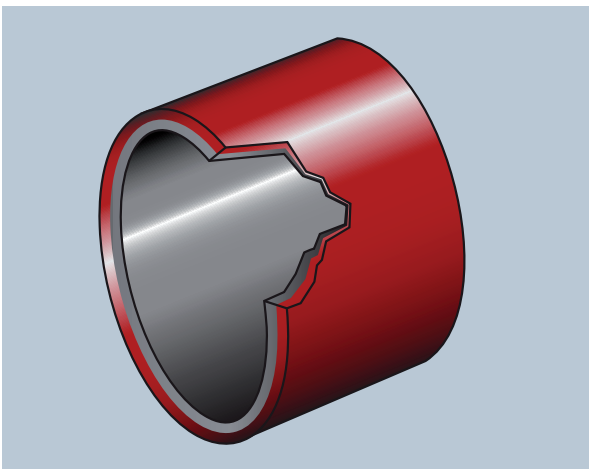
The new medium voltage Ensto Underground range includes heat shrink joints and terminations and screened separable connectors. This product package was developed in co-operation with our customers, placing a special emphasis on ease of installation. The medium voltage joints, for instance, have new dual-layer tubes that make installation easier and decrease the number of components. This also prevents air gaps, bubbles, and pollution between stress control tube and insulation layer.

The lifetime of Ensto tubes is long, they shrink easily and are very easy to install.

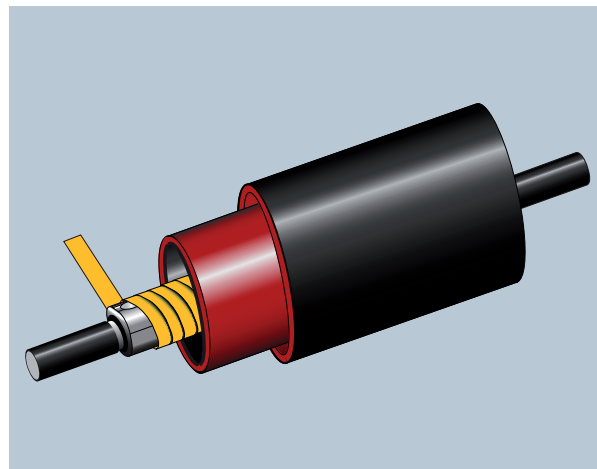
Ensto plug-in connectors are suitable for switchgears as indicated in DIN 47636. They are water-proof and screened. Connecting and disconnecting the terminations is easy and fast, and no special tools or minimum installation distances are required.

Ensto's packages have been designed to include all the required components. Ensto Underground solution covers the following medium voltage product packages:

1. 12 to 36 kV indoor and outdoor terminations for 1 core and 3 core plastic and paper insulated cables
2. 12 to 36 kV straight and transition joints for 1 core and 3 core plastic and paper insulated cables
3. 12 to 24 kV plug-in connectors for indoor and outdoor installations, including straight and elbow models



Combined dual-layer stress control / insulation heat shrink tube.



Inner layer of 20 kV joint: shear head bolt connector, stress control tape, combined dual-layer stress control / insulation heat shrink tube and combined insulating semi-conductive heat shrink tube.





## MEDIUM VOLTAGE CABLE ACCESSORIES

### Medium voltage cable joints

#### Heat shrink joints

#### HJW11 joint kits AHXAMK-W

The joint kit is used for jointing of medium voltage cables with XLPE insulation and aluminium tape shield. The kit is suitable for AHXAMK-W cables and it contains components for three cores.

TYPE	EAN	CONDUCTOR SIZE mm <sup>2</sup> 12 kV	CONDUCTOR SIZE mm <sup>2</sup> 24 kV	PACKAGE/ PCS
<b>24 kV without connectors</b>				
HJW11.2402	6418677446993	50-120	25-95	1
HJW11.2403	6418677447006	120-240	95-240	1
HJW11.2404	6418677447013	240-300	150-300	1
<b>24 kV with connectors</b>				
HJW11.2402C	6418677447051	Al/Cu 50-95	Al/Cu 25-95	1
HJW11.2403C	6418677447068	Al/Cu 120-240	Al/Cu 95-240	1
HJW11.2404C	6418677447075	Al/Cu 240-300	Al/Cu 150-300	1



#### HJ11 joint kits 1 core XLPE

The joint kit is used for jointing of medium voltage cables with XLPE insulation and copper wire shield. The kit is suitable for single core cables and it contains the components for one core.

TYPE	EAN	CONDUCTOR SIZE mm <sup>2</sup>	PACKAGE/ PCS
<b>12 kV without connectors</b>			
HJ11.1202	6418677444739	25-95	1
HJ11.1203	6418677444753	95-240	1
HJ11.1204	6418677444777	150-300	1
<b>12 kV with connectors</b>			
HJ11.1202C	6418677444746	Al/Cu 25-95	1
HJ11.1203C	6418677444760	Al/Cu 95-240	1
HJ11.1204C	6418677444784	Al/Cu 150-300	1
<b>24 kV without connectors</b>			
HJ11.2402	6418677444852	25-95	1
HJ11.2403	6418677444876	95-240	1
HJ11.2404	6418677444890	150-300	1
<b>24 kV with connectors</b>			
HJ11.2402C	6418677444869	Al/Cu 25-95	1
HJ11.2403C	6418677444883	Al/Cu 95-240	1
HJ11.2404C	6418677444906	Al/Cu 150-300	1



#### HJ33 joint kits 3 core XLPE

The joint kit is used for jointing of medium voltage cables with XLPE insulation and copper wire shield. The kit is suitable for three core cables.

TYPE	EAN	CONDUCTOR SIZE mm <sup>2</sup>	PACKAGE/ PCS
<b>12 kV without connectors</b>			
HJ33.1202	6418677445033	25-95	1
HJ33.1203	6418677445057	95-240	1
HJ33.1204	6418677445071	150-300	1
<b>12 kV with connectors</b>			
HJ33.1202C	6418677445040	Al/Cu 25-95	1
HJ33.1203C	6418677445064	Al/Cu 95-240	1
HJ33.1204C	6418677445088	Al/Cu 150-300	1
<b>24 kV without connectors</b>			
HJ33.2402	6418677445156	25-95	1
HJ33.2403	6418677445170	95-240	1
HJ33.2404	6418677445194	150-300	1
<b>24 kV with connectors</b>			
HJ33.2402C	6418677445163	Al/Cu 25-95	1
HJ33.2403C	6418677445187	Al/Cu 95-240	1
HJ33.2404C	6418677445200	Al/Cu 150-300	1





## MEDIUM VOLTAGE CABLE ACCESSORIES

### Medium voltage cable joints

#### Heat shrink joints

#### HJP11 joint kits 3 core paper

The joint kit is used for jointing of medium voltage cables with paper insulation and individual lead or aluminium sheaths. The kit is suitable for three core cables, both armoured and non-armoured.

TYPE	EAN	CONDUCTOR SIZE mm²	PACKAGE/PCS
<b>24 kV without connectors</b>			
HJP11.2402	6418677449321	35-95	1
HJP11.2403	6418677449222	95-240	1
<b>24 kV with connectors</b>			
HJP11.2402C	6418677449338	Al/Cu 35-95	1
HJP11.2403C	6418677449239	Al/Cu 95-240	1



#### HJP33 joint kits 3 core belted paper

The joint kit is used for jointing of medium voltage cables with belted paper insulation and lead or aluminium sheath. The kit is suitable for three core cables, both armoured and non-armoured.

TYPE	EAN	CONDUCTOR SIZE mm²	PACKAGE/PCS
<b>12 kV without connectors</b>			
HJP33.1202	6418677447365	35-95	1
HJP33.1203	6418677447389	120-240	1
<b>12 kV with connectors</b>			
HJP33.1202C	6418677447372	Al/Cu 35-95	1
HJP33.1203C	6418677447396	Al/Cu 120-240	1



#### HJPM33 filler joint kits 3 core belted paper

The filler joint kit is used for jointing of max. 12 kV cables with belted paper insulation and lead or aluminium sheath. The kit is suitable for three core cables, both armoured and non-armoured.

TYPE	EAN	CONDUCTOR SIZE mm²	PACKAGE/PCS
<b>12 kV without cable lugs</b>			
HJPM33.1202	6418677449246	35-95	1
HJPM33.1203	6418677449260	120-240	1
<b>12 kV with cable lugs</b>			
HJPM33.1202C	6418677449253	35-95	1
HJPM33.1203C	6418677449277	120-240	1



#### HJTW11 joint kits 3 core paper to XLPE 1 core

The joint kit is used for jointing of medium voltage cables with paper insulation and individual lead or aluminium sheaths to AHXAMK-W cables or to single core cables with XLPE insulation and copper wire or tape shield.

TYPE	EAN	CONDUCTOR SIZE mm²	PACKAGE/PCS
<b>24 kV without connectors</b>			
HJTW11.2402	6418677449192	35-95	1
HJTW11.2403	6418677449178	95-240	1
HJTW11.2404	6418677450679	185-300	1
<b>24 kV with connectors</b>			
HJTW11.2402C	6418677449208	Al/Cu 35-95	1
HJTW11.2403C	6418677449185	Al/Cu 95-240	1
HJTW11.2404C	6418677450686	Al/Cu 185-300	1
<b>Additional earthing kit for armoured paper insulated cable</b>			
SJEW20	6418677449161	35-300	1



## MEDIUM VOLTAGE CABLE ACCESSORIES

### Medium voltage cable joints

#### Heat shrink joints

##### HJT31 joint kits 3 core belted paper to XLPE 1 core

The joint kit is used for jointing of medium voltage three core cables with belted paper insulation and lead or aluminium sheath, either armoured or non-armoured, to single core cables with XLPE insulation and copper wire or tape shield.

When jointing to an AHXAMK-W cable an additional earthing kit SJEW10 is required.

TYPE	EAN	CONDUCTOR SIZE mm <sup>2</sup>	PACKAGE/ PCS
<b>12 kV without connectors</b>			
HJT31.1202	6418677447402	35-95	1
HJT31.1203	6418677447426	120-240	1
<b>12 kV with connectors</b>			
HJT31.1202C	6418677447419	Al/Cu 35-95	1
HJT31.1203C	6418677447433	Al/Cu 120-240	1
<b>Additional earthing kit for AHXAMK-W</b>			
SJEW10	6418677449154	35-240	1



##### HJT33 joint kits 3 core belted paper to XLPE 3-core

The joint kit is used for jointing of medium voltage three core cables with belted paper insulation and lead or aluminium sheath, either armoured or non-armoured, to three core cables with XLPE insulation and copper wire shield.

TYPE	EAN	CONDUCTOR SIZE mm <sup>2</sup>	PACKAGE/ PCS
<b>12 kV without connectors</b>			
HJT33.1202	6418677453267	35-95	1
HJT33.1203	6418677452260	120-240	1
<b>12 kV with connectors</b>			
HJT33.1202C	6418677453274	35-95	1
HJT33.1203C	6418677452253	120-240	1



##### HJU33 joint kits universal cables

The joint kit is used for jointing of max. 24 kV three core universal cables EXCEL, FXCEL and AXCES without tensioning.

TYPE	EAN	CONDUCTOR SIZE mm <sup>2</sup> 12 kV	CONDUCTOR SIZE mm <sup>2</sup> 24 kV	PACKAGE/ PCS
HJU33.2401	6418677450754	10-16	10-16	1
HJU33.2402	6418677450761	70-95	70-95	1



##### SJEW additional kits

The additional kit is used when jointing of max. 24 kV 3 core cables with copper wire shield to AHXAMK-W cables HJW11 type basic kit is needed.

TYPE	EAN	CONDUCTOR SIZE mm <sup>2</sup> 12 kV	CONDUCTOR SIZE mm <sup>2</sup> 24 kV	PACKAGE/ PCS
SJEW42	6418677449345	Al/Cu 25-150	Al/Cu 25-70	1
SJEW43	6418677449352	Al/Cu 150-300	Al/Cu 95-300	1



MEDIUM VOLTAGE CABLE ACCESSORIES

Medium voltage cable joints

Heat shrink joints

SJE additional kits

The additional kit is used when jointing of max. 24 kV three core XLPE insulated cables with copper wire shield to single core XLPE insulated cables with copper wire shield. HJ11 type basic kits are needed.

TYPE	EAN	CONDUCTOR SIZE mm² 12 kV	CONDUCTOR SIZE mm² 24 kV	PACKAGE/ PCS
SJE42	6418677452062	Al/Cu 25-150	Al/Cu 25-70	1
SJE43	6418677452079	Al/Cu 150-300	Al/Cu 95-300	1



WP additional kits

The additional kit is used to add a radial water tightness property to a normal joint of max. 24 kV cables.

TYPE	EAN	CABLE DIAM. mm	PACKAGE/ PCS
WP1.1	6418677435454	26-45	1
WP3.1	6418677431289	40-65	1
WP3.2	6418677431302	60-95	1



SJCWM additional kits

Additional kit is used for jointing of AHXAMK-WM or Axclight-H cable insulated messenger in the ground.

TYPE	EAN	MESSANGER mm²	PACKAGE/ PCS
SJCWM1	6418677422959	16-95	1



## MEDIUM VOLTAGE CABLE ACCESSORIES

### Medium voltage cable terminations

#### Heat shrink terminations

##### HITW1 indoor termination kits AHXAMK-W

The termination kit is used for indoor terminating of XLPE insulated medium voltage cables with aluminium tape shield. The kit is suitable for AHXAMK-W cables, containing the components for three cores.

TYPE	EAN	CONDUCTOR SIZE mm <sup>2</sup> 12 kV	CONDUCTOR SIZE mm <sup>2</sup> 24 kV	TERMINATION LENGTH mm	SHED DIAMETER mm	NO OF SHEDS PER PHASE	PACKAGE/ PCS
<b>24 kV without cable lugs</b>							
HITW1.2402	6418677446795	50-120	25-95	420	90	1	1
HITW1.2403	6418677446801	120-240	95-240	420	115	1	1
HITW1.2404	6418677446818	240-300	150-300	420	115	1	1
<b>24 kV with cable lugs</b>							
HITW1.2402L	6418677446726	Al/Cu 50-95	Al/Cu 25-95	420	90	1	1
HITW1.2403L	6418677446733	Al/Cu 120-240	Al/Cu 95-240	420	115	1	1
HITW1.2404L	6418677446856	Al/Cu 240-300	Al/Cu 150-300	420	115	1	1



##### HIT1 indoor termination kits 1 core XLPE

The termination kit is used for indoor terminating of XLPE insulated medium voltage cables with copper wire shield. The kit is suitable for single core cables, containing components for three cores.

TYPE	EAN	CONDUCTOR SIZE mm <sup>2</sup> 12 kV	CONDUCTOR SIZE mm <sup>2</sup> 24 kV	TERMINATION LENGTH mm	SHED DIAMETER mm	NO OF SHEDS PER PHASE	PACKAGE/ PCS
<b>12 kV without cable lugs</b>							
HIT1.1202	6418677444098	25-95		370			1
HIT1.1203	6418677444111	95-240		370			1
HIT1.1204	6418677444135	150-300		370			1
<b>12 kV with cable lugs</b>							
HIT1.1202L	6418677444104	Al/Cu 25-95		370			1
HIT1.1203L	6418677444128	Al/Cu 95-240		370			1
HIT1.1204L	6418677444142	Al/Cu 150-300		370			1
<b>24 kV without cable lugs</b>							
HIT1.2402	6418677444210		25-95	420	90	1	1
HIT1.2403	6418677444234		95-240	420	115	1	1
HIT1.2404	6418677444258		150-300	420	115	1	1
<b>24 kV with cable lugs</b>							
HIT1.2402L	6418677444227		Al/Cu 25-95	420	90	1	1
HIT1.2403L	6418677444241		Al/Cu 95-240	420	115	1	1
HIT1.2404L	6418677444265		Al/Cu 150-300	420	115	1	1





# MEDIUM VOLTAGE CABLE ACCESSORIES

## Medium voltage cable terminations

### Heat shrink terminations

#### HIT3 indoor termination kits 3 core XLPE

The termination kit is used for indoor terminating of medium voltage cables with XLPE insulation and copper wire shield. The kit is suitable for three core cables.



TYPE	EAN	CONDUCTOR SIZE mm² 12 kV	CONDUCTOR SIZE mm² 24 kV	TERMINATION LENGTH mm	SHED DIAMETER mm	NO OF SHEDS PER PHASE	PACKAGE/ PCS
<b>12 kV without cable lugs</b>							
HIT3.1202	6418677444418	25-95		450-1100			1
HIT3.1203	6418677444432	95-240		450-1100			1
HIT3.1204	6418677444456	150-300		450-1100			1
<b>12 kV with cable lugs</b>							
HIT3.1202L	6418677444425	Al/Cu 25-95		450-1100			1
HIT3.1203L	6418677444449	Al/Cu 95-240		450-1100			1
HIT3.1204L	6418677444463	Al/Cu 150-300		450-1100			1
<b>24 kV without cable lugs</b>							
HIT3.2402	6418677444531		25-95	500-1100	90	1	1
HIT3.2403	6418677444555		95-240	500-1100	115	1	1
HIT3.2404	6418677444579		150-300	500-1100	115	1	1
<b>24 kV with cable lugs</b>							
HIT3.2402L	6418677444548		Al/Cu 25-95	500-1100	90	1	1
HIT3.2403L	6418677444562		Al/Cu 95-240	500-1100	115	1	1
HIT3.2404L	6418677444586		Al/Cu 150-300	500-1100	115	1	1

#### HITP3 indoor termination kits 3 core belted paper

The termination kit is used for indoor terminating of medium voltage cables with belted paper insulation and lead or aluminium sheath. The kit is suitable for three core cables, both armoured and non-armoured.



TYPE	EAN	CONDUCTOR SIZE mm² 12 kV	CONDUCTOR SIZE mm² 24 kV	TERMINATION LENGTH mm	SHED DIAMETER mm	NO OF SHEDS PER PHASE	PACKAGE/ PCS
<b>12 kV without cable lugs</b>							
HITP3.1201	6418677447242	25-35		750-1350			1
HITP3.1202	6418677447266	35-95		750-1350			1
HITP3.1203	6418677447280	120-240		750-1350			1
<b>12 kV with cable lugs</b>							
HITP3.1201L	6418677447259	Al/Cu 25-35		750-1350			1
HITP3.1202L	6418677447273	Al/Cu 35-95		750-1350			1
HITP3.1203L	6418677447297	Al/Cu 120-240		750-1350			1

#### HOTW1 outdoor termination kits AHXAMK-W

The termination kit is used for outdoor terminating of XLPE insulated medium voltage cables with aluminium tape shield and plastic outer sheath. The kit is suitable for AHXAMK-W cables, containing components for three cores.



TYPE	EAN	CONDUCTOR SIZE mm² 12 kV	CONDUCTOR SIZE mm² 24 kV	TERMINATION LENGTH mm	SHED DIAMETER mm	NO OF SHEDS PER PHASE	PACKAGE/ PCS
<b>24 kV without cable lugs</b>							
HOTW1.2402	6418677446894	50-120	25-95	420	90	3	1
HOTW1.2403	6418677446900	120-240	95-240	420	115	3	1
HOTW1.2404	6418677446917	240-300	150-300	420	115	3	1
<b>24 kV with cable lugs</b>							
HOTW1.2402L	6418677446740	Al/Cu 50-95	Al/Cu 25-95	420	90	3	1
HOTW1.2403L	6418677446757	Al/Cu 120-240	Al/Cu 95-240	420	115	3	1
HOTW1.2404L	6418677446955	Al/Cu 240-300	Al/Cu 150-300	420	115	3	1

## MEDIUM VOLTAGE CABLE ACCESSORIES

### Medium voltage cable terminations

#### Heat shrink terminations

#### HOT1 outdoor termination kits 1 core XLPE

The termination kit is used for outdoor terminating of XLPE insulated medium voltage cables with copper wire shield. The kit is suitable for single core cables, containing components for three cores.

TYPE	EAN	CONDUCTOR SIZE mm <sup>2</sup> 12 kV	CONDUCTOR SIZE mm <sup>2</sup> 24 kV	TERMINATION LENGTH mm	SHED DIAMETER mm	NO OF SHEDS PER PHASE	PACKAGE/ PCS
<b>12 kV without cable lugs</b>							
HOT1.1202	6418677443350	25-95		370	90	1	1
HOT1.1203	6418677443374	95-240		370	115	1	1
HOT1.1204	6418677443398	150-300		370	115	1	1
<b>12 kV with cable lugs</b>							
HOT1.1202L	6418677443367	Al/Cu 25-95		370	90	1	1
HOT1.1203L	6418677443381	Al/Cu 95-240		370	115	1	1
HOT1.1204L	6418677443404	Al/Cu 150-300		370	115	1	1
<b>24 kV without cable lugs</b>							
HOT1.2402	6418677443473		25-95	420	90	3	1
HOT1.2403	6418677443497		95-240	420	115	3	1
HOT1.2404	6418677443510		150-300	420	115	3	1
<b>24 kV with cable lugs</b>							
HOT1.2402L	6418677443480		Al/Cu 25-95	420	90	3	1
HOT1.2403L	6418677443503		Al/Cu 95-240	420	115	3	1
HOT1.2404L	6418677443527		Al/Cu 150-300	420	115	3	1



#### HOT3 outdoor termination kits 3 core XLPE

The termination kit is used for outdoor terminating of medium voltage cables with XLPE insulation and copper wire shield. The kit is suitable for three core cables.

TYPE	EAN	CONDUCTOR SIZE mm <sup>2</sup> 12 kV	CONDUCTOR SIZE mm <sup>2</sup> 24 kV	TERMINATION LENGTH mm	SHED DIAMETER mm	NO OF SHEDS PER PHASE	PACKAGE/ PCS
<b>12 kV, without cable lugs</b>							
HOT3.1202	6418677443671	25-95		500-1400	90	1	1
HOT3.1203	6418677443695	95-240		500-1400	115	1	1
HOT3.1204	6418677443718	150-300		500-1400	115	1	1
<b>12 kV, with cable lugs</b>							
HOT3.1202L	6418677443688	Al/Cu 25-95		500-1400	90	1	1
HOT3.1203L	6418677443701	Al/Cu 95-240		500-1400	115	1	1
HOT3.1204L	6418677443725	Al/Cu 150-300		500-1400	115	1	1
<b>24 kV, without cable lugs</b>							
HOT3.2402	6418677443794		25-95	500-1400	90	3	1
HOT3.2403	6418677443817		95-240	500-1400	115	3	1
HOT3.2404	6418677443831		150-300	500-1400	115	3	1
<b>24 kV, with cable lugs</b>							
HOT3.2402L	6418677443800		Al/Cu 25-95	500-1400	90	3	1
HOT3.2403L	6418677443824		Al/Cu 95-240	500-1400	115	3	1
HOT3.2404L	6418677443848		Al/Cu 150-300	500-1400	115	3	1



#### HOTP1 outdoor termination kits 3 core paper

The termination kit is used for indoor and outdoor terminating of max. 24 kV cables with paper insulation and individual lead or aluminium sheaths. The kit is suitable for three core cables, either armoured or non-armoured.

TYPE	EAN	CONDUCTOR SIZE mm <sup>2</sup> 12 kV	CONDUCTOR SIZE mm <sup>2</sup> 24 kV	TERMINATION LENGTH mm	SHED DIAMETER mm	NO OF SHEDS PER PHASE	PACKAGE/ PCS
<b>24 kV without cable lugs</b>							
HOTP1.2402	6418677452048		35-95	800-1600	90	3	1
HOTP1.2403	6418677449215		95-240	800-1600	115	3	1
<b>24 kV with cable lugs</b>							
HOTP1.2402L	6418677452055		Al/Cu 35-95	800-1600	90	3	1
HOTP1.2403L	6418677449147		Al/Cu 95-240	800-1600	115	3	1



## MEDIUM VOLTAGE CABLE ACCESSORIES

### Medium voltage cable terminations

#### Heat shrink terminations

#### HOTP3 outdoor termination kits 3 core belted paper

The termination kit is used for outdoor terminating of medium voltage cables with belted paper insulation and lead or aluminium sheath. The kit is suitable for three core cables, either armoured or non-armoured.

TYPE	EAN	CONDUCTOR SIZE mm <sup>2</sup> 12 kV	CONDUCTOR SIZE mm <sup>2</sup> 24 kV	TERMINATION LENGTH mm	SHED DIAMETER mm	NO OF SHEDS PER PHASE	PACKAGE/ PCS
<b>12 kV without cable lugs</b>							
HOTP3.1201	6418677447303	25-35		950-1550	90	1	1
HOTP3.1202	6418677447327	35-95		950-1550	90	1	1
HOTP3.1203	6418677447341	120-240		950-1550	115	1	1
<b>12 kV with cable lugs</b>							
HOTP3.1201L	6418677447310	Al/Cu 25-35		950-1550	90	1	1
HOTP3.1202L	6418677447334	Al/Cu 35-95		950-1550	90	1	1
HOTP3.1203L	6418677447358	Al/Cu 120-240		950-1550	115	1	1



#### HITU3 and HOTU3 termination kits universal cables

The termination kit is used for terminating of max. 24 kV three core universal cables EXCEL, FXCEL and AXCES.

TYPE	EAN	CONDUCTOR SIZE mm <sup>2</sup> 12 kV	CONDUCTOR SIZE mm <sup>2</sup> 24 kV	TERMINATION LENGTH mm	SHED DIAMETER mm	NO OF SHEDS PER PHASE	PACKAGE/ PCS
<b>12 kV indoor terminations without cable lugs</b>							
HITU3.1201	6418677450693	10-16		500-1100			1
<b>24 kV indoor terminations without cable lugs</b>							
HITU3.2401	6418677450709		10-16	500-1100	90	1	1
HITU3.2402	6418677450716	70-95	70-95	500-1100	90	1	1
<b>12 kV outdoor terminations without cable lugs</b>							
HOTU3.1201	6418677450723	10-16		500-1000	90	1	1
<b>24 kV outdoor terminations without cable lugs</b>							
HOTU3.2401	6418677450730		10-16	500-1100	90	3	1
HOTU3.2402	6418677450747	70-95	70-95	500-1100	90	3	1



#### SJCW additional kits AHXAMK-W earthing

The additional earthing kits SJCW2595.1 and SJCW70240.1 are used when terminating AHXAMK-W cable using a HIT1 or HOT1 type single core cable termination.

SJCW2595.2, SJCW70240.2 and SJCW70240.3 earthing kits are used when terminating AHXAMK-W cable using a USQJ630, URZJ250 and URZTJ250 separable connectors.

TYPE	EAN	CONDUCTOR SIZE mm <sup>2</sup> 12 kV	CONDUCTOR SIZE mm <sup>2</sup> 24 kV	PACKAGE/ PCS
SJCW2595.1	6418677446351	25-95	25-95	1
SJCW2595.2	6418677449369	25-95	25-95	1
SJCW70240.1	6418677419577	70-240	70-240	1
SJCW70240.2	6418677433276	70-240	70-240	1
SJCW70240.3	6418677445323	70-240	70-240	1



#### STE additional kits core shielding

The additional core shielding kit is used to change a three core cable to three single core cables. The kit is suitable for max. 24 kV XLPE insulated cables with copper wire shield.

The kit is needed for instance when terminating three core cables using screened separable connectors type URZJ, URZTJ or USQJ.

TYPE	EAN	CONDUCTOR SIZE mm <sup>2</sup> 12 kV	CONDUCTOR SIZE mm <sup>2</sup> 24 kV	PACKAGE/ PCS
STE5	6418677449307	10-95	10-95	1
STE6	6418677449291	95-240	95-240	1



## MEDIUM VOLTAGE CABLE ACCESSORIES

### Medium voltage cable terminations

#### Screened separable connectors

#### URZJ Elbow plug-in connectors 250 A

Screened elbow connectors are used for the installation of 12 - 24 kV XLPE insulated cables in transformers, motors, and especially SF6 switchgears. They are suitable for indoor and outdoor installations. Nominal current is 250 A. The separable connectors are suitable for switchgears according to DIN47636 and EN50181.



TYPE	EAN	CONDUCTOR SIZE mm² 12 kV	CONDUCTOR SIZE mm² 24 kV	DIA ON THE INSULATION mm	PACKAGE/ PCS
<b>Elbow plug-in connectors 250 A</b>					
URZJ250.5	6418677443985	Al 50		16.8-19.2	1
URZJ250.7	6418677443992	Al 70		16.8-19.2	1
URZJ250.9	6418677444005	Al 95		19.7-22.5	1
URZJ250.12	6418677443978	Al 120		19.7-22.5	1
URZJ250.35	6418677438073		Cu 35	16.8-19.2	1
URZJ250.50	6418677438080		Al 50	19.7-22.5	1
URZJ250.70	6418677438097		Al 70	21.5-24.6	1
URZJ250.95	6418677438103		Al 95	21.5-24.6	1
URZJ250.120	6418677438110		Al 120	23.9-27.3	1
<b>Additional earthing kits for AHXAMK-W cables</b>					
SJCW2595.2	6418677449369	25-95	25-95	17.0 - 28.0	1
SJCW70240.2	6418677433276	70-240	70-240	23.0 - 39.0	1

#### URZTJ Straight plug-in connectors 250 A

Screened straight connectors are used for the installation of 12-24 kV XLPE insulated cables in transformers, motors, and especially SF6 switchgears. They are suitable for indoor and outdoor installations. Nominal current is 250 A. The separable connectors are suitable for switchgears according to DIN47636 and EN50181.



TYPE	EAN	CONDUCTOR SIZE mm² 12 kV	CONDUCTOR SIZE mm² 24 kV	DIA ON THE INSULATION mm	PACKAGE/ PCS
<b>Straight plug-in connectors 250 A</b>					
URZTJ250.5	6418677444029	Al 50		16.8-19.2	1
URZTJ250.7	6418677444036	Al 70		16.8-19.2	1
URZTJ250.9	6418677444043	Al 95		19.7-22.5	1
URZTJ250.12	6418677444012	Al 120		19.7-22.5	1
URZTJ250.35	6418677438127		Cu 35	16.8-19.2	1
URZTJ250.50	6418677438134		Al 50	19.7-22.5	1
URZTJ250.70	6418677438141		Al 70	21.5-24.6	1
URZTJ250.95	6418677438158		Al 95	21.5-24.6	1
URZTJ250.120	6418677438165		Al 120	23.9-27.3	1
<b>Additional earthing kits for AHXAMK-W cables</b>					
SJCW2595.2	6418677449369	25-95	25-95	17.0 - 28.0	1
SJCW70240.2	6418677433276	70-240	70-240	23.0 - 39.0	1

#### USQJ Bolted type connectors 630 A

Screened separable connectors are used for the installation of 12- 24 kV XLPE insulated cables to transformers, motors, and especially to SF6 switchgears. They are suitable for indoor and outdoor installations. Connectors have nominal current of 630 A. They are suitable for both copper and aluminium conductors. The separable connectors are suitable for switchgears according to DIN47636 and EN50181.



TYPE	EAN	CONDUCTOR SIZE mm² 12 kV	CONDUCTOR SIZE mm² 24 kV	DIA ON THE INSULATION mm	PACKAGE/ PCS
<b>Bolted type connectors 630 A</b>					
USQJ630.1	6418677438004	Al/Cu 50-70	Al/Cu 25-35	16.3-18.6	1
USQJ630.2	6418677438011		Al/Cu 50-70	19.7-22.5	1
USQJ630.25	6418677444050	Al/Cu 95-120		19.7-22.5	1
USQJ630.3	6418677438028	Al/Cu 150-185	Al/Cu 95-120	22.9-26.1	1
USQJ630.4	6418677438035	Al/Cu 240	Al/Cu 150	24.5-28.0	1
USQJ630.5	6418677438042		Al/Cu 185-240	27.7-31.7	1
USQJ630.55	6418677444067	Al/Cu 300		27.7-31.7	1
USQJ630.6	6418677438059		Al/Cu 300	32.5-37.2	1
<b>Additional earthing kits for AHXAMK-W cables</b>					
SJCW2595.2	6418677449369	25-95	25-95	17.0 - 28.0	1
SJCW70240.2	6418677433276	70-240	70-240	23.0 - 39.0	1







## Notes





UTILITY NETWORKS

ENSTO SEKKO OY  
P.O.BOX 51  
06101 PORVOO, FINLAND  
TEL. +358 (0)204 76 21  
FAX +358 (0)204 76 2770  
UTILITY.NETWORKS@ENSTO.COM  
WWW.ENSTO.COM